





**Q-5) Write True or False:**

- 1) Satellite is sent into outer space by rockets.
- 2) Courier is a private postal services.
- 3) ISD is used to make local calls.
- 4) Perennial and ephemeral plants grow in the arid climate of desert.
- 5) Some older sand dunes are stable and may reach up to a height of 300 feet.
- 6) Due to global warming and climate change, the glaciers are melting.
- 7) Shivalik is the lowest Himalayan range.

---

---

---

---

---

---

---

**Q-6) Classify the following :-**

**A Himadri and Himachal**

[ Yamunotri Glaciers, Middle Himalayas, Mt. Everest, Kullu Valley, Greater Himalaya , Pir Panjal ]

Himadri	Himachal

**B. Mass Communication and Computer**

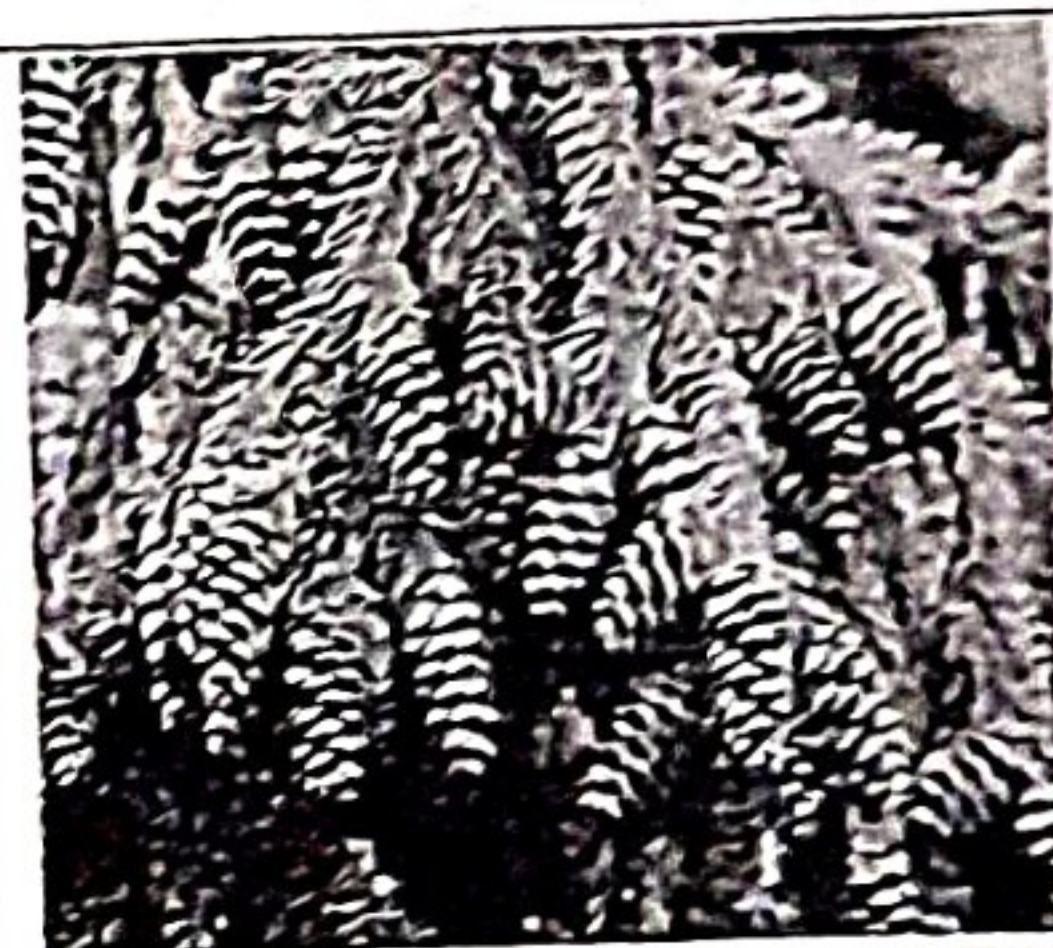
[ Magazine, Radio, Fax Machine, Newspaper, Inland letter, Cinema, Telephone ]

Personal communication	Mass communication

**Q-7) Picture Talk**

(A) 1) Identify the picture.

2) In which range of Himalaya it is found?



(B) 1) Identify the person shown here.

2) Which revolutionary invention he has made?



**Q-8) Identify the pictures and name them:-**

