

# VASISHTHA GENESIS SCHOOL, BARDOLI

(Academic Session: 2025-26)

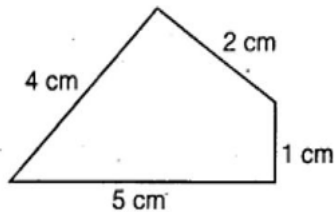
Date: \_\_\_\_\_ Class: 6 Div: \_\_\_\_\_ Roll No: \_\_\_\_\_ Sub: Maths

Name: \_\_\_\_\_ Ch-6 Worksheet

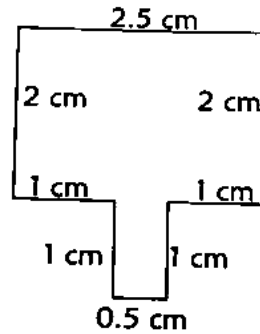
## Ch-6 Perimeter and Area

Q1. Find the perimeter for the following:

(i)



(ii)



Q2. Find the perimeter of rectangle, if its dimensions are:

(i)  $l = 7 \text{ cm}$ ,  $b = 4 \text{ cm}$

(ii)  $l = 10.5 \text{ cm}$ ,  $b = 4.5 \text{ cm}$

Q3. Determine the side of a regular polygon with the given perimeter:

(i) 42 cm; Hexagon

(ii) 900 m; Decagon

**Q4. Find the area of a square whose side is :**

(i) 50 m

(ii) 12 cm

**Q5. Find the area of a rectangle, whose dimensions are:**

(i)  $l = 48 \text{ m}$ ,  $b = 50 \text{ m}$

(ii)  $54 \text{ cm} \times 25 \text{ cm}$

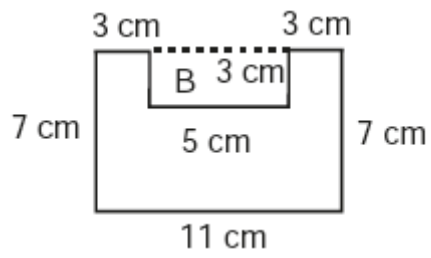
**Q6. Find the missing value in each of the following:**

(i) In a rectangle, perimeter = 240 cm, breadth 40 cm, length =? and area =?

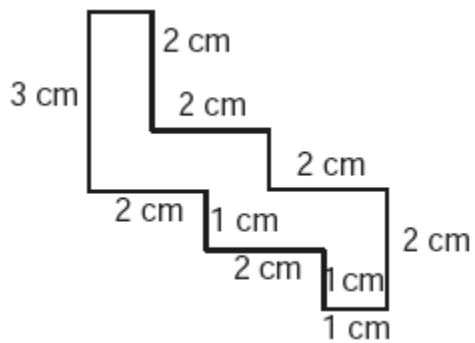
(ii) In a square, area =  $64 \text{ cm}^2$ , side = ?, perimeter = ?

**Q7. Find the area for the following:**

(i)

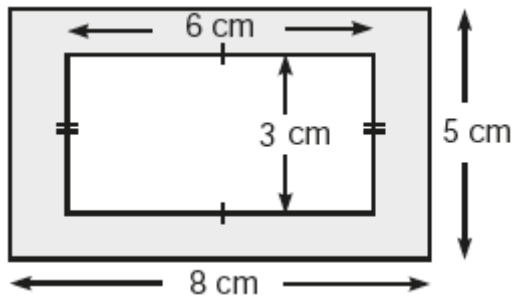


(ii)

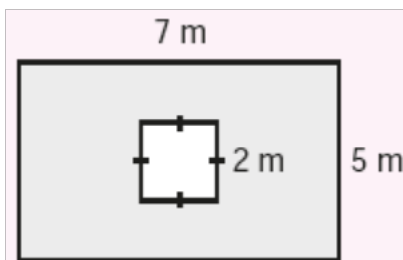


**Q8. Find the area of the shaded portions:**

(i)



(ii)



**Q9. Solve the given word problems:**

(i) A rectangular field is 50 m x 40 m. Krishiv goes 20 times around it. How much distance does he cover?

(ii) Find the cost of fencing a square park of side 325 m at the rate of Rs 25 per metre.

(iii) A tile measures 10 cm x 10 cm. How much such tiles are required to cover a wall of 4 m x 2.5 m?

(iv) The total cost of flooring a room at Rs 125 per sq.m is Rs.10000. If the breadth of the room is 8 metres. Find its length.

(v) The cost of putting a fence around a square field at the rate of Rs 25 per metre is Rs 1600. Find the length of each side of the field.

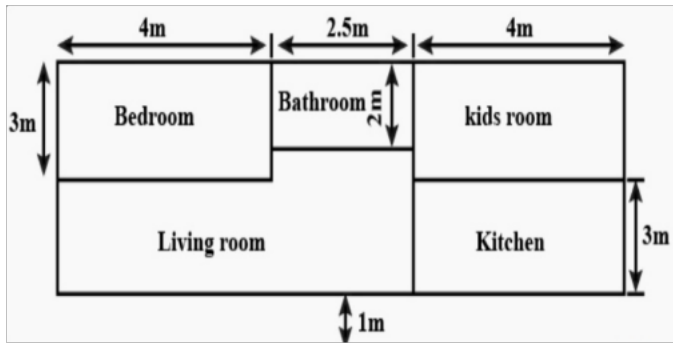
(vi) Four square flower beds each side 4 m are dug in four corners on a piece of land 12 m long and 10 m wide. Find the area of the remaining part of the land.

(vii) The length and breadth of a rectangular sheet of paper is 25 m and 16 m respectively. A square sheet of side equal to one-fourth of the breadth of rectangular sheet is removed from each corner of the sheet. Find the area of the remaining portion of the sheet.

(viii) Priya runs around a square field of side 28 m. Prakash runs around a rectangular field with length 17 m and breadth 12m. Who covers more distance and by how much?

**Q10. The diagrams show the floor plan of a house. Find the area for the given:**

(i) Find the area of Bedroom, Bathroom and Kitchen.



(ii) Find the area of Dinning Room and Living Room.

