



Exercises

Objective Type Questions

A. Choose the correct option.

- Which of these plants has a taproot system?
a. Rice b. Wheat c. Onion d. Mustard
- Which of these plants has a fibrous root system?
a. Radish b. Onion c. Carrot d. Bean
- Which of these is a root that stores food?
a. Potato b. Turnip c. Ginger d. Sugar cane
- Which of these are woody plants with thick and strong stems?
 a. Trees b. Climbers c. Shrubs d. Creepers
- All of these are leaves that store food, except:
a. cabbage b. broccoli c. spinach d. lettuce

B. Name the following.

- A large, thick root that grows straight down from a plant
- A root system composed of a bunch of small, branching roots growing from the end of the stem
- Food factory of plants
- Plants with weak stem that need support to grow upright
- Present in green leaves, it helps to absorb sunlight

Taproot
Fibrous root system
leaf
climbers
Chlorophyll

C. Fill in the blanks.

- climbers are plants that need support to climb up.
- Root is the part of a plant that grows under the soil.
- The pumpkin plant is an example of a..... creeper
- Oxygen gas is given out by green plants during the process of making food.
- Papaya has many (one/few/many) seeds.

D. Write T for True statements or F for False statements.

- A single thick root with many branches is a taproot.

T



2. A green plant can make food at night.
3. All the food made by plants is stored in fruits.
4. Tiny tubes present in a leaf are called stomata.
5. All fruits have only one seed.

E. Match the following.

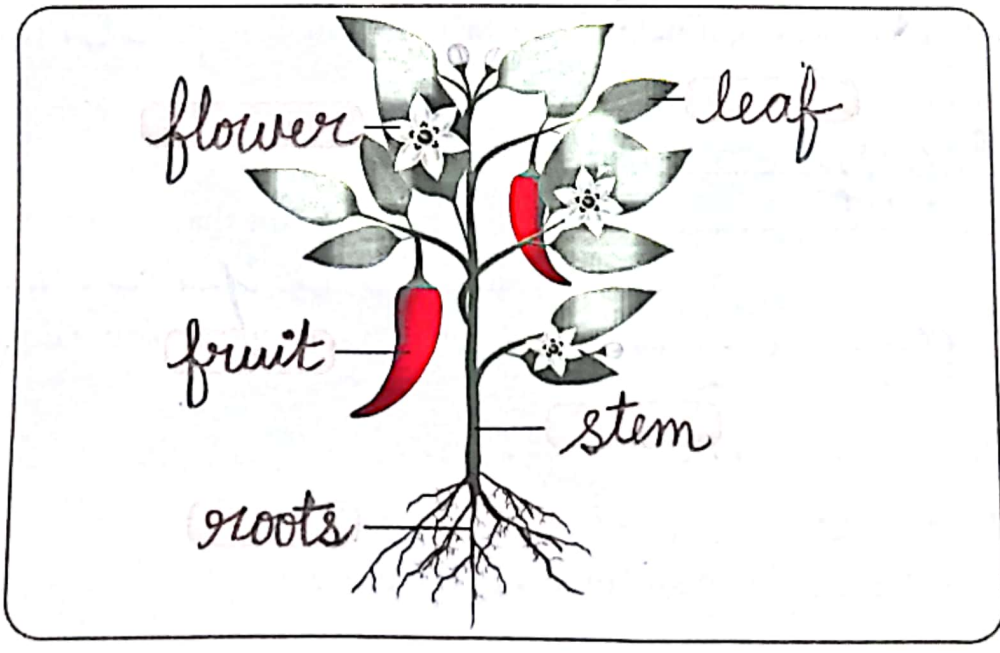
- | | | |
|-----------|-----------------------------------------------------|---|
| 1. Stem | a. Produces food | 5 |
| 2. Flower | b. Bears branches and leaves | 1 |
| 3. Fruit | c. Brightly coloured | 2 |
| 4. Root | d. Formed from a flower | 3 |
| 5. Leaf | e. Grows underground and absorbs water and minerals | 4 |

Theoretical Questions

A. Answer the following questions in brief. (in c.o.w N.B)

1. What is the difference between taproot and fibrous roots?
2. List the functions of the root.
3. List three functions of the stem.
4. What are stomata?
5. Where is the food made by plants stored?
6. List the things that a plant uses to make food.

B. Label the parts of the plant shown.





Thinking Skills

1. Which of these will grow up to be a tree – a small mango plant or a small mint plant? *Mango plant*
2. It is beneficial to sleep under a tree during the day but not at night. Why? (Hint: What gas does a tree give out during the day and at night?) *Day: oxygen, Night: carbon di*
3. Plants can make their own food. Then why is there food stored in a seed for the young plant? *To feed the young plant until it grows leaves. oxide*

LEARNING BEYOND CLASSROOM



- A. Visit a park with an elder and collect a few leaves, fruits and seeds. Stick the leaves in your science logbook. Draw pictures of the fruits and seeds. Find out the names of the plants they belong to and write them down.
- B. Find the conditions required for the proper growth of a plant.

Aim: To find the conditions required for the proper growth of a plant.

Materials required: Four similar potted plants

Procedure:

1. Label the potted plants as A, B and C.
2. Place plant A in sunlight and water it regularly.
3. Place plant B in sunlight but do not water it.
4. Place plant C in a dark room and water it regularly.

Observe the plants after 3-4 days. Which plant shows better growth? Why?

