



SHREE VASISHTHA VIDHYALAYA

Science Worksheet 2026-27



Name : - _____

Std.:-V - _____

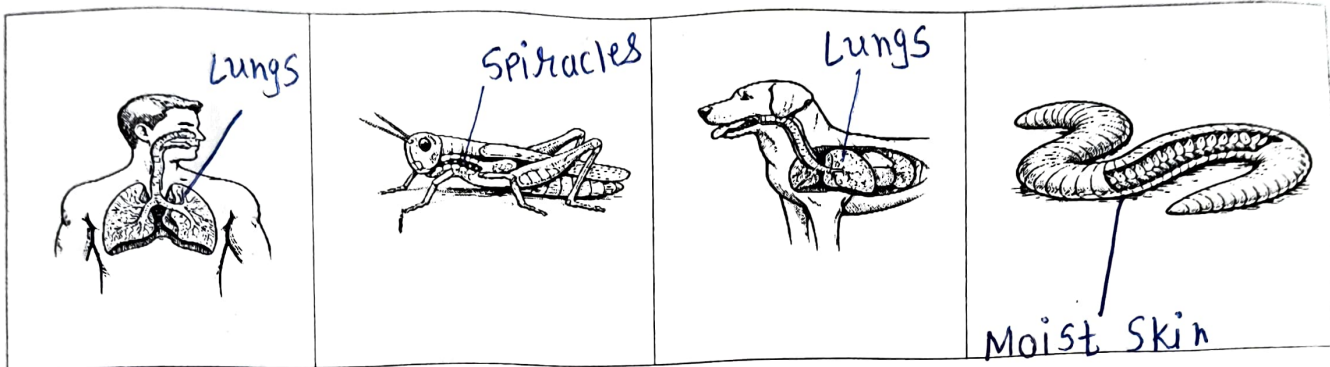
Roll No. :- _____

Worksheet No. PA-01

Date : - _____

Ch-1 Growing plants , Ch-6 Animals: Habitat and Adaptation

Q1. Label the breathing organs of the following animals.



Q2. Choose the correct option.

1) Statement 1: Cotyledons store food for the baby plant.

Statement 2: Seed coat helps in making food.

- a) Both Statement 1 and 2 are correct
- b) Both Statement 1 and 2 are incorrect
- c) Statement 1 correct, Statement 2 incorrect
- d) Statement 1 incorrect, Statement 2 correct

2) Statement 1: Seeds with wings are dispersed by wind.

Statement 2: Coconut seeds are dispersed by animals.

- a) Both Statement 1 and 2 are correct
- b) Both Statement 1 and 2 are incorrect
- c) Statement 1 correct, Statement 2 incorrect
- d) Statement 1 incorrect, Statement 2 correct

3) Statement 1: Desert animals are adapted to live in hot and dry conditions.

Statement 2: They need a lot of water daily to survive.

- a) Both Statement 1 and 2 are correct
- b) Both Statement 1 and 2 are incorrect
- c) Statement 1 correct, Statement 2 incorrect
- d) Statement 1 incorrect, Statement 2 correct

4) Statement 1: Fish can live on land for a long time.

Statement 2: Fish breathe through gills.

a) Both correct

b) Both incorrect

c) Statement 1 correct, Statement 2 incorrect

d) Statement 1 incorrect, Statement 2 correct

Q-3 Read the paragraph carefully and answer the following Questions

Riya planted some bean seeds in a pot. She watered them daily and kept the pot in sunlight. After a few days, the seeds started to swell and break open. Tiny roots came out first, followed by a small shoot. As the plant grew bigger, green leaves appeared. The cotyledons slowly shrank and disappeared.

In another pot, she sowed many seeds very close together. After germination, the plants did not grow well because they competed for water, sunlight, and nutrients.

1) Why did the plants in the second pot not grow well?

a. A. Lack of seeds B. Too much space C. Competition for resources

2) What happens to cotyledons during growth?

a. A. They grow bigger B. They become roots C. They shrink and disappear

3) The tiny plant that grows from a seed is called a Seedling.

4) Why should seeds not be sown too close to each other? because they compete for water, sunlight, space and nutrients, so they do not grow properly

Q-4 Think and Answer

1) Imagine that one day land suddenly gets covered by ice. What kinds of adaptations might human develop over a time to live in the icy land?

Human may develop thicker body fat, more body hair and better ability to conserve heat

2) What might happen if plants could only reproduce from the seeds?

plants would reproduce more slowly and some plants might not survive easily.

Q-5 Picture-Based Question

Look carefully at the picture and answer:

1) This turtle is called "Olive Ridley" because:

a) It eats olives

b) Its shell is olive-green in color

c) It lives on olive trees



2) This animal is seen on the sandy beach. Why has it come there?

It has come to the beach to lay eggs.

3) This animal lays eggs in:

a) Water

b) Sand

c) Trees